



A stunning modern three-bedroom semi-detached bungalow, beautifully presented and finished to a high standard throughout. This fully modernised home offers stylish living with a well-designed layout that perfectly balances comfort and practicality.

Situated in a highly sought-after location, the property benefits from excellent local amenities, convenient transport links, and a strong sense of community, making it ideal for a range of buyers including families, downsizers, and professionals alike.

Internally, the property has been thoughtfully upgraded to create bright, contemporary living spaces, while externally it offers a well-maintained setting that complements the overall appeal of the home. Ready to move straight into, this is a rare opportunity to acquire a modern bungalow in such a desirable position.

Offered at offers over £550,000, this property is competitively priced to generate strong interest.

Get in touch today to arrange your viewing.

## Lansdowne Avenue

Leigh-on-Sea

**£550,000**

Offers Over

- Character semi-detached bungalow
- Newly fitted kitchen breakfast room
- Bay-fronted master bedroom with fitted wardrobes and an en-suite shower room
- Landscaped West facing rear garden
- Huge loft area housing a new combination boiler
- Three bedrooms
- Newly installed contemporary bathroom suite
- Duel aspect lounge opening onto the rear garden
- Driveway for one large vehicle and a lean-to giving access to the rear garden
- Moments from Leigh Road and Leigh Broadway shopping facilities.



# Lansdowne Avenue



## Frontage

Crazy paved driveway for one large vehicle, side access to a lead to which leads to the rear garden, door to:

## 'L' Shaped Entrance Hallway

Smooth coved ceiling with two pendant lights, loft hatch with a loft ladder (large loft area which is fully boarded and has a new combination boiler located here), composite entrance door to the side with a double-glazed window above, wood panelled walls, two column radiator, INVICTUS LVT Herringbone flooring, doors to all rooms.

## Bedroom One

16'2" into the bay > 12'2" into the bay x 10'4" up

Smooth coved ceiling with a ceiling rose and a pendant light, double-glazed bay windows to the front with fitted shutter blinds, floor-to-ceiling built-in wardrobes, two-column radiator, INVICTUS LVT Herringbone flooring, pocket door to:

## En-Suite

6'6" x 3'2"

Smooth ceiling with inset spotlights, extractor fan, shower with a rainfall head and shower hose, wall-hung vanity unit wash basin, low-level WC, brushed brass wall-hung heated towel rail, fully tiled walls, tiled flooring.

## Bedroom Two

10'8" into the bay x 9'2" up to the wardrobes

Smooth coved ceiling with a ceiling rose and a pendant light, double-glazed bay windows to the front with fitted shutter blinds, a two-column radiator, floor-to-ceiling built-in wardrobes, INVICTUS LVT Herringbone flooring.

## Bedroom Three/Office

8'0" x 8'0"

Smooth coved ceiling with a pendant light, double-glazed window to the side, two base-level cupboards with a roll edge wooden worktop and two display cabinets with work bench space, radiator, INVICTUS LVT Herringbone flooring.

## Kitchen Breakfast Room

12'4" x 12'0"

Smooth coved ceiling with three feature pendant lights, picture rail, double-glazed French doors to the rear opening out onto the garden with double-glazed windows above, courtyard area just outside. Modern shaker style kitchen comprising of; wall and base level units with two floor-to-ceiling units, one housing an integrated fridge and freezer on a 70/30 split, space for an am range master with a five-ring gas hob and an extractor fan above, two sets of drawers, integrated washing machine, integrated dishwasher, island with a breakfast bar and a 1.5 inset sink, radiator, INVICTUS LVT Herringbone flooring.

## Bathroom

7'10" x 5'8"

Smooth ceiling with inset spotlights, obscured double-glazed window to the side, extractor fan, freestanding bath with a freestanding tap and shower attachment, low-level WC, vanity unit worktop-mounted wash basin, brushed brass heated towel rail, backlit mirror, fully tiled walls, tiled flooring.

## Dual Aspects Lounge

16'2" > 13'8" x 14'6"

Smooth coved ceiling with a ceiling rose and a pendant light, wall lights, double-glazed windows to the side, double-glazed French doors to the rear leading out to the garden with adjacent double-glazed windows, feature wood panelled walls, two two-column radiators, one being a vertical one, INVICTUS LVT Herringbone flooring.

## Rear Garden

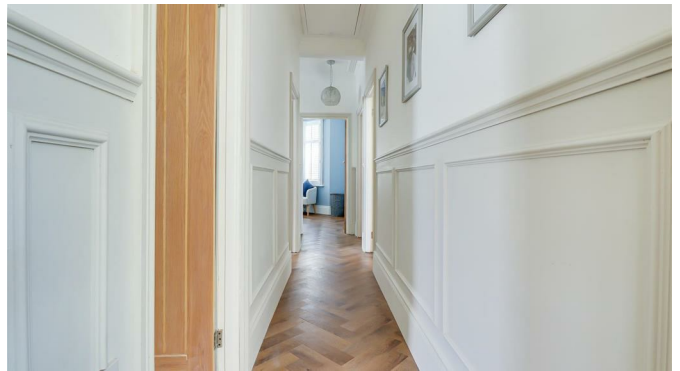
Commences with a patio area with the remainder laid to lawn in the center, tree and shrub border, outside lighting, access to:

## Lean-To

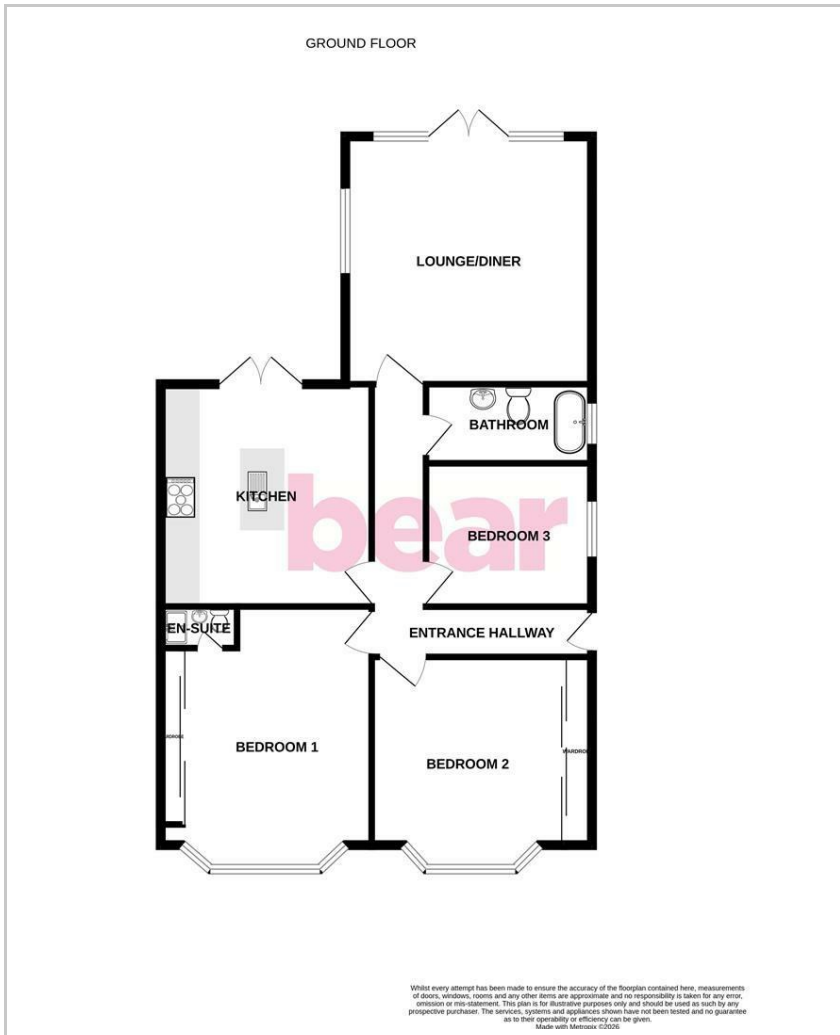
Gives you access from the garden through to the front driveway, power, light, water.

## Agents Notes:

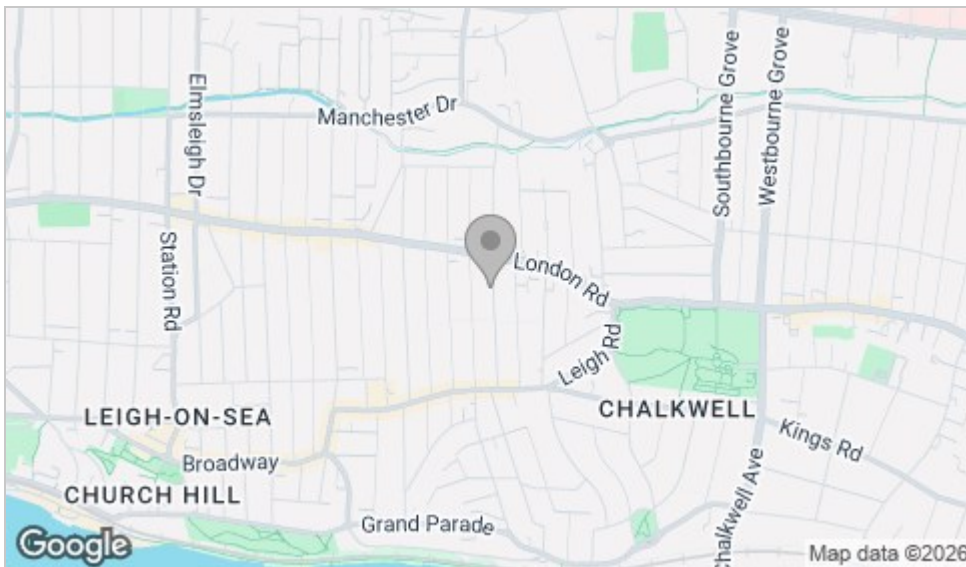
New combination boiler in the loft



# Floor Plan



# Area Map



# Viewing

Please contact our Leigh-on-Sea Office on 01702 887 496 if you wish to arrange a viewing appointment for this property or require further information.

These particulars, whilst believed to be accurate are set out as a general outline only for guidance and do not constitute any part of an offer or contract. Intending purchasers should not rely on them as statements of representation of fact, but must satisfy themselves by inspection or otherwise as to their accuracy. No person in this firm's employment has the authority to make or give any representation or warranty in respect of the property.

1336 London Road, Leigh-on-Sea, Essex, SS9 2UH

Office: 01702 887 496 [los@bearestateagents.co.uk](mailto:los@bearestateagents.co.uk) <http://www.bearestateagents.co.uk/>

# Energy Efficiency Graph

